

# End-Of-Journey Facilities

## UBC02



Metal cladding on roof for above ground applications

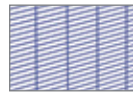
Pedestrian gate with magnetic lock and access control

Either horizontal or vertical racks, or a combination of both can be used to store bicycles

**PLEASE NOTE:** Rack selection and AS2890 compliance could reduce the quantity of bicycles to be parked within the cage. Please consult our sales team for free layout drawings and advice.



50 x 50 x 4mm galvanised wire mesh  
INFILLWMESH

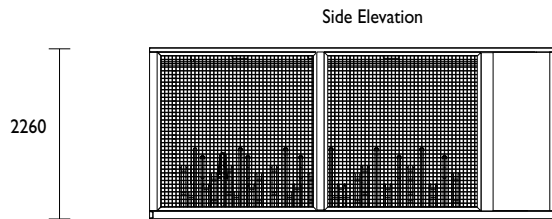


Choice of mesh cladding  
71 x 9 x 4mm security mesh (higher anti-cutting protection)  
INFILLSCMESH

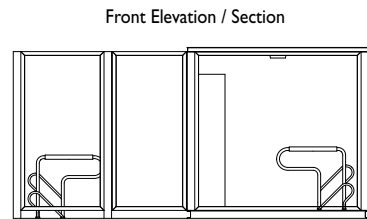


50 x 10mm timber slats  
INFILLTIM50

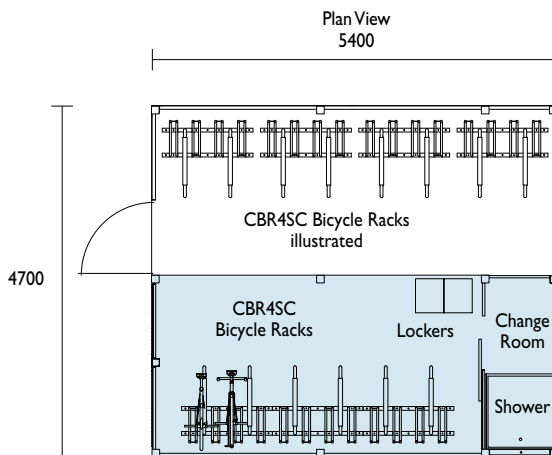
In underground installations, modules can be easily connected to mains power and water / drainage services and can be expanded to 2, 3 or more car spaces providing secure cages catering for a larger number of cyclists. The Securabike modular design allows for the complete package to be delivered to the site in kit form and easily assembled thus avoiding the need for major building work.



Side Elevation



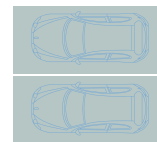
Front Elevation / Section



Plan View  
5400

Modular wire mesh panels used to expand to 2 car spaces

UBC01 Module (Covered Top)



Converting 2 car spaces

**Material Specifications (General)**

Structure 100 x 100 / 100 x 50 steel sections / Galvanised / Powder coated in a range of colours  
Cladding 50 x 50 x 4mm / 71 x 9 x 4mm steel mesh / Metal cladding / Galvanised / Powder coated in a range of colours

