

# Lockers

Product Range

1300 780 450

**BSL18D**  
Horizontal

Comes with three point locking system with T handle as standard.  
Range of other locks available at an additional cost upon request.

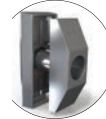
**Double locker with horizontal storage**

**BSL18D**  
Galvabond®  
**SBSL18D**  
Stainless Steel

Optional ventilation panel

Creased roof panel to provide strength and fall for water run-off (stiffener channel underneath)

Optional stencil signage



T handle provides improved vandal resistance and allows master keying

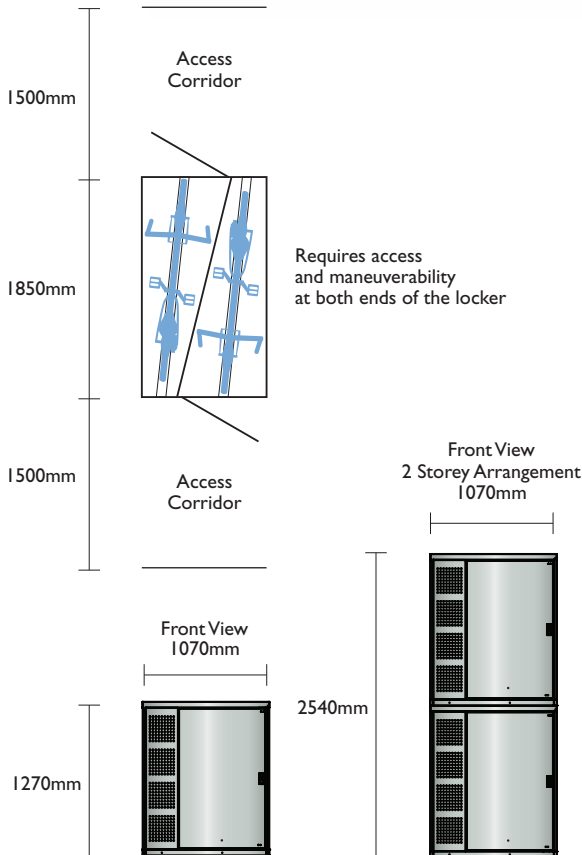
Three point secure locking

10mm hole for scope camera

**PLEASE NOTE:**  
This product comes in galvanised finish as standard. However, it can be powder coated in a range of colours at an additional cost to suit requirements.

**MOST POPULAR MODEL**

Plan View



Suitable for stacking two high



Optional (TBL ramp) wheel ramp or Securabike's unique gas strut power assist system.

**Material Specifications (General)**

Material 1.6mm Galvabond® sheet  
Inclusions Reinforced door & roof stiffeners, clothes / helmet hooks, 3-way locking, security camera access  
Finish Galvansied steel

